



Laby®-GI fuel gas compressor systems

Lubricated and non-lubricated solutions
for MAN ME-GI powered LNG carriers

Fully integrated compressor solution

Burckhardt Compression offers a variety of compressor solutions for fuel gas compression that have been specifically designed for marine applications. Our ME-GI fuel gas compressor systems are designed for BOG management on LNG carriers equipped with MAN ME-GI two-stroke engines.

The well-proven Laby®-GI compressors offer a power-efficient solution for fuel gas compression and support the optimization of the ship's operational costs (OPEX). The fully balanced compressor system can supply gensets, the propulsion engine and the reliquefaction system. In addition, it can be operated in parallel to the pump vaporizer unit.

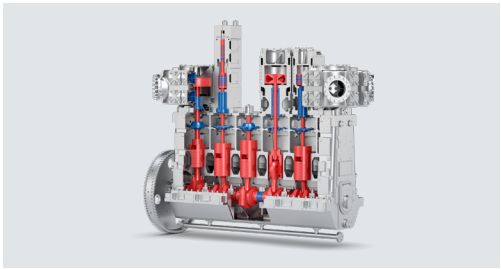
Customer benefits

- Low power consumption leads to minimized operational costs (OPEX)
- Multi-purpose compression for ME-GI engines, gensets and PRS supply
- Unique piston sealing technology for maximum reliability and availability
- No major maintenance between dry docks necessary with lubricated high-pressure stages
- No oil contamination of cargo with non-lubricated high-pressure stages
- Ship's crew can perform onboard maintenance
- Full range of after-sales services available

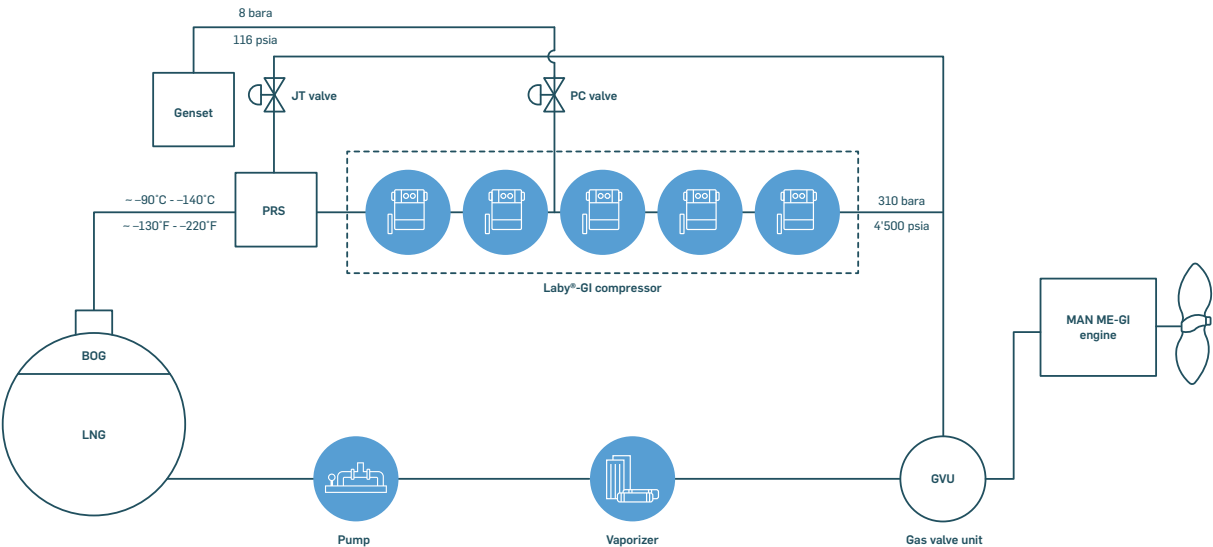
Fully balanced fuel gas compression

Design features

- Gas-tight crankcase for greater safety and zero gas loss
- Cryogenic operation without BOG pre-warming
- No vibrations due to elimination of unbalanced forces and moments
- Designed according to marine standards
- Available as non-lubricated compressor up to 310 bar



Process layout (Non-lubricated)



Technical data

| Type | Typical mass flow kg/h / lbs/h | Width mm / in | Height mm / in | Length mm / in | Weight kg / lbs |
|----------|-----------------------------------|------------------|-------------------|-------------------|--------------------|
| 4LP250 | < 4'500 / 9'900 | 7'000 / 275 | 5'000 / 200 | 13'000 / 510 | 127'000 / 280'000 |
| 4LP250-V | < 4'500 / 9'900 | 7'000 / 275 | 5'000 / 200 | 13'000 / 510 | 125'000 / 275'000 |
| 5LP250 | < 5'200 / 11'500 | 7'000 / 275 | 5'000 / 200 | 13'000 / 510 | 137'000 / 302'000 |
| 5LP250-V | < 5'200 / 11'500 | 7'000 / 275 | 5'000 / 200 | 13'000 / 510 | 135'000 / 300'000 |
| 6LP250 | < 6'000 / 13'200 | 7'000 / 275 | 5'000 / 200 | 13'000 / 510 | 157'000 / 345'000 |
| 6LP250-V | < 6'000 / 13'200 | 7'000 / 275 | 5'000 / 200 | 13'000 / 510 | 155'000 / 340'000 |