

LABY® FUEL GAS COMPRESSOR SYSTEMS

FOR WINGD X-DF POWERED LNG CARRIERS

FULLY INTEGRATED COMPRESSOR SOLUTION

Burckhardt Compression offers a variety of compressor solutions for fuel gas compression that have been specifically designed for marine applications. Our X-DF fuel gas compressor systems are designed for BOG management on LNG carriers equipped with WinGD X-DF two-stroke engines.

The well-proven Laby® Compressors offer the most power-efficient solution for fuel gas compression and support the optimization of the ship's operational costs (OPEX). The oil-free compressor system can supply gen-sets, the propulsion engine and the reliquefaction system. In addition, it can be operated in parallel to the pump vaporizer unit.

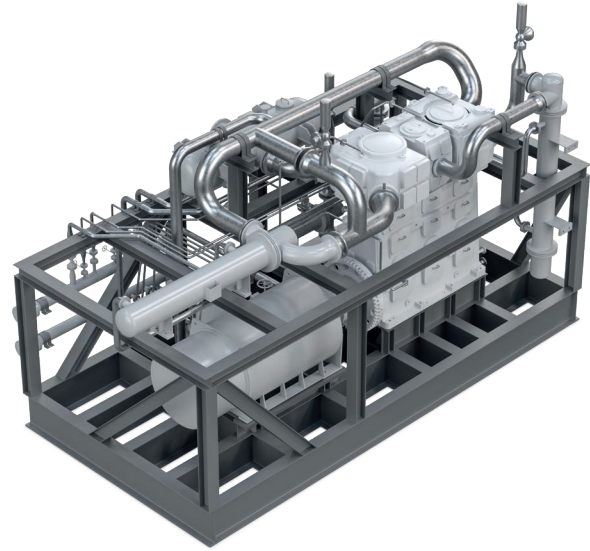
CUSTOMER BENEFITS OF LABY® COMPRESSORS

- Low power consumption leads to minimized operational costs (OPEX)
- Gas-tight crankcase for greater safety and zero gas loss
- Oil-free compression to prevent oil contamination of LNG
- Low maintenance costs due to labyrinth sealing technology
- Robust process control without surge and choke limits
- Insensitivity to gas and operation conditions
- Ship's crew can perform onboard maintenance
- Full range of after-sales services available

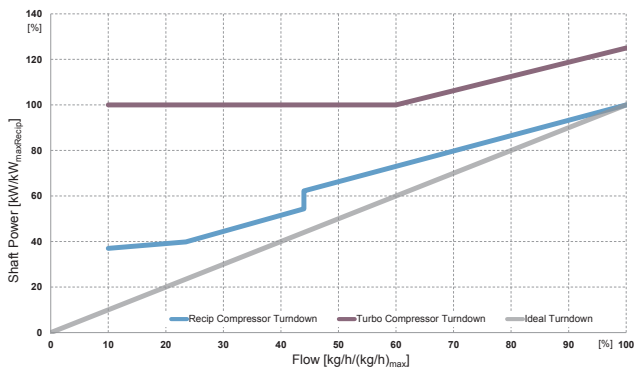
OIL-FREE FUEL GAS COMPRESSION

DESIGN FEATURES

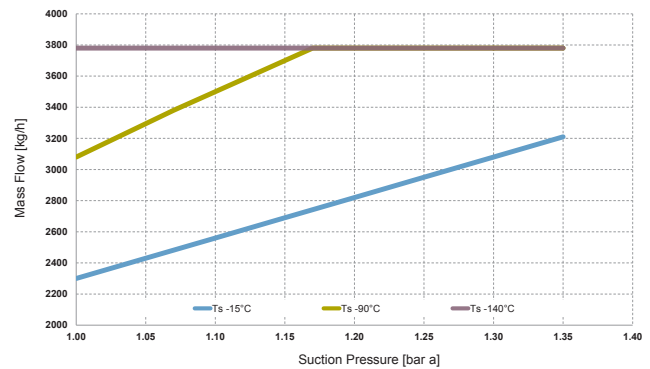
- Contactless oil-free gas compression
- Cryogenic operation without BOG pre-warming
- Unique wear-free labyrinth piston sealing technology
- Minimized vibrations for improved integration in marine applications
- Easy installation thanks to compact design
- Minimized quantity of wear parts
- Compliant with IMO, IGF and IGC codes
- Designed according to marine standards



EFFICIENCY ENHANCEMENT OF RECIPROCATING COMPRESSORS VS. TURBO COMPRESSORS



BOG MASS FLOW CAPABILITY OF X-DF FUEL GAS COMPRESSOR



TECHNICAL DATA

Type	Max. Mass Flow kg/h* / lbs/h*	Rated Power kW / hp	Width mm / in	Height mm / in	Length mm / in	Weight kg / lbs
3DL200 X-DF	3'750 / 8'270	590 / 790	5'050 / 200	4'770 / 190	8'550 / 340	52'000 / 114'640

*Depending on gas composition. Suction pressure: 1.0 - 1.35 bar a (14.5 - 20 psi a). Gas temperature: -90 - -140 °C (-130 - -220 °F)

Burckhardt Compression

24-hour emergency tel.: +41 52 262 53 53
 info@burckhardtcompression.com
 www.burckhardtcompression.com